

# THE GLASS FACTORY / building 9

attractive bow truss building for commercial or adaptive reuse



for lease:  
5,500 SF Clear Span Bow Truss Building  
Pilsen East

THE GLASS FACTORY / building 9  
2101 S Peoria Street  
Chicago, Illinois 60608

THE GLASS FACTORY / building 9

2101 South Peoria, Chicago

**PODMAJERSKY** 312.738.8000 x123  
www.podmajersky.com

reference code: 2101p

# the glass factory.



THE GLASS FACTORY / building 9

2101 South Peoria, Chicago

**PODMAJERSKY** 312.738.8000 x123  
www.podmajersky.com

reference code: 2101p

# the glass factory.



attractive bow truss building for commercial or adaptive reuse

<b>space:</b>	Approx. 5,500 sf, high visibility corner location.
<b>ceiling height:</b>	13' 3" clear under trusses. 18' 11" at highest point.
<b>loading :</b>	One drive in door (12' 8"w x 13' h). Additional drive-in door possible.
<b>bay sizes:</b>	200 amp (larger services available to suit).
<b>power:</b>	200 amp (larger services available to suit).
<b>HVAC:</b>	Gas unit heaters (upgrade to full HVAC possible at additional cost).
<b>zoning:</b>	C3-2 (located in enterprise zone 1).
<b>parking:</b>	Ample street parking. No meters or pay boxes.
<b>description:</b>	Newly renovated 50' x 110' clear span bow truss garage building for light industrial/commercial use. High bay lighting with 5 skylights and recent roof. Suitable for light industrial, showroom, or distribution space; also adaptable for creative office or retail use. Fantastic location in East Pilsen just 1 block from I-94 interchange at Canalport.

Information contained herein is from sources deemed reliable and is submitted subject to errors, omissions and changes in price or terms without notice

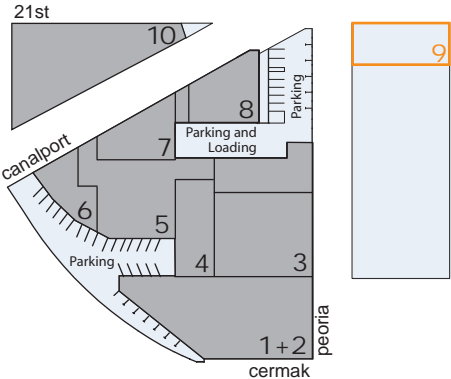
THE GLASS FACTORY / building 9

2101 South Peoria, Chicago

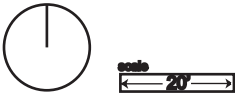
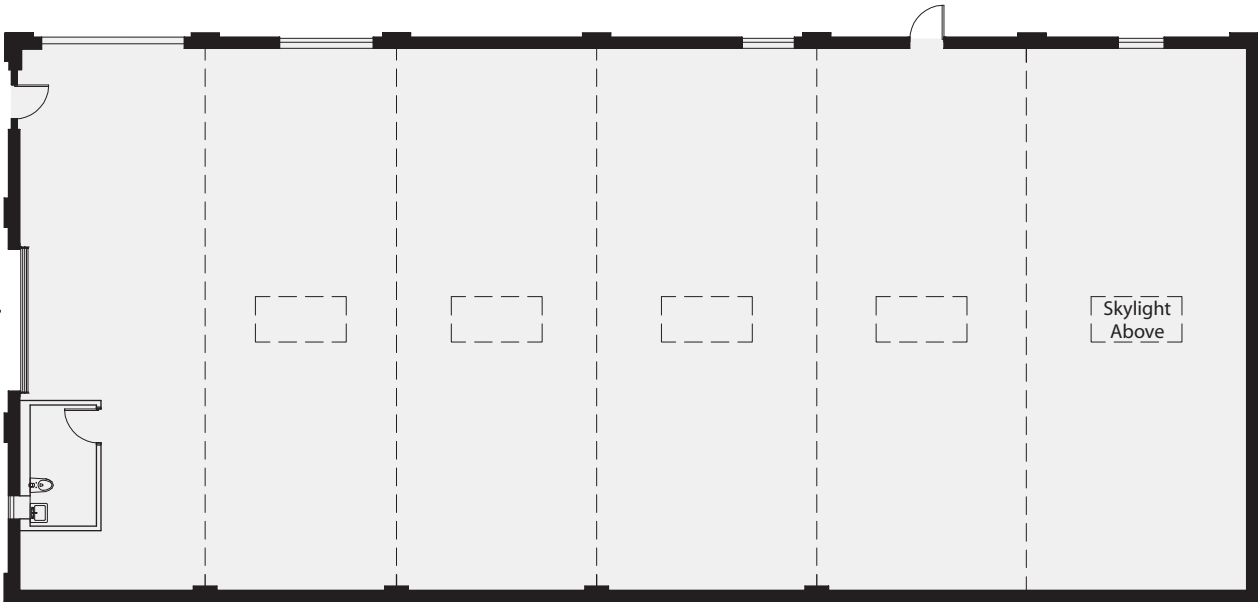
**PODMAJERSKY** 312.738.8000 x123  
www.podmajersky.com

reference code: 2101p

# the glass factory.



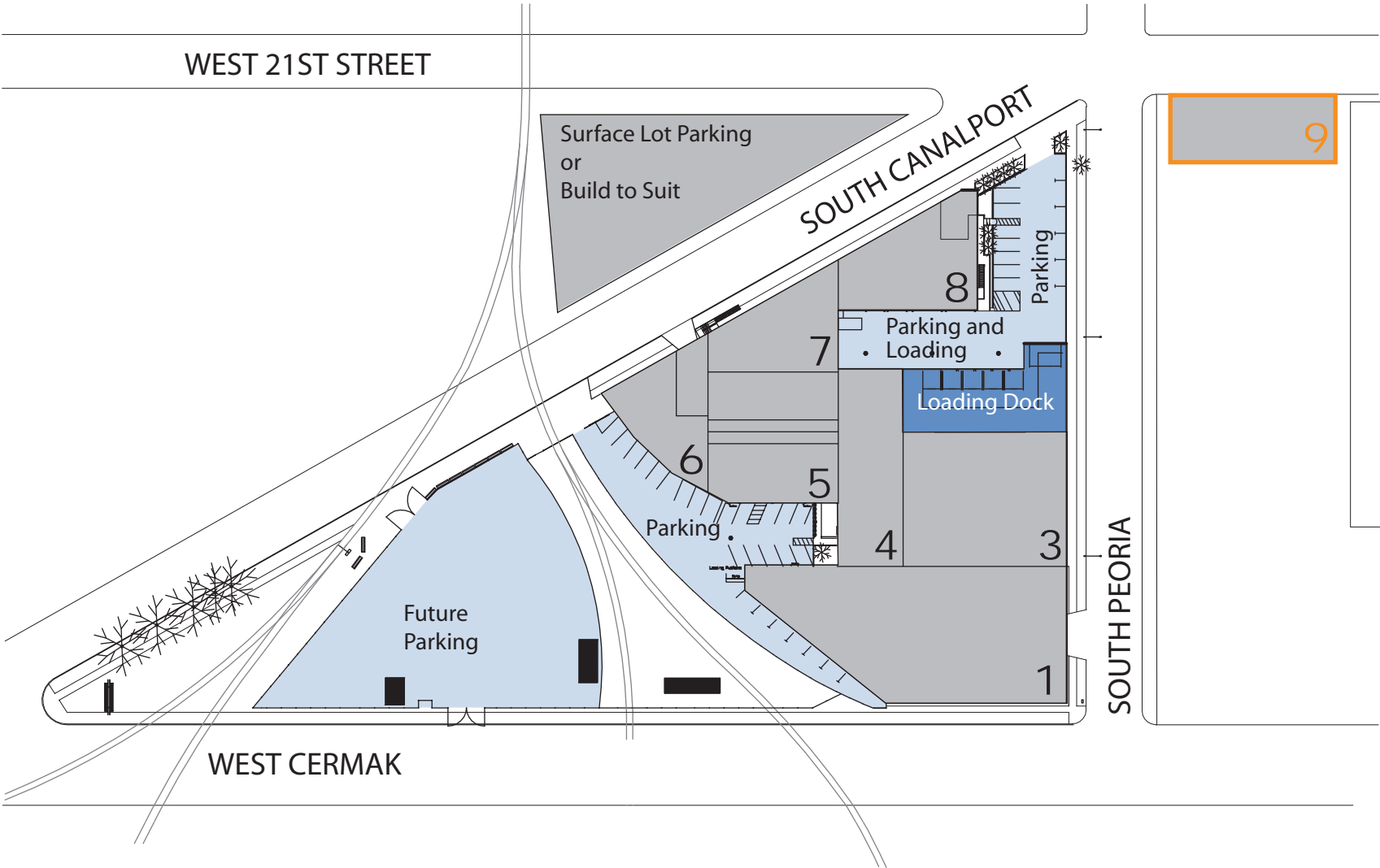
12' 8" w x 13' h  
Overhead Garage Door



THE GLASS FACTORY / building 9

2101 South Peoria, Chicago

# the glass factory.



THE GLASS FACTORY / site plan

900 West Cermak, Chicago